

Quick Start Guide

Thank you for choosing the SimScope® Auscultation Training Stethoscope.

How would you like to start?

1. Software Installation

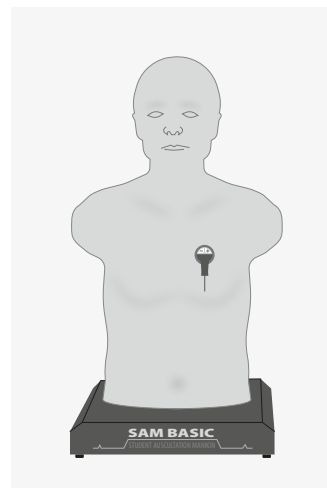
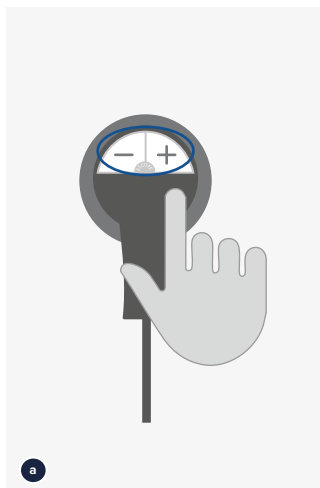
IF LAPTOP IS INCLUDED – Software is already installed

IF NO LAPTOP IS INCLUDED – Use USB stick or download: cardionics.com/en/software-download

2. I would like to begin using SimScope® with the default sounds

SimScope® can be used right out of the box with preloaded auscultation sounds. If you don't need to change the sounds immediately, please follow these steps:

- Turn on SimScope® by pressing either the plus (+) or minus (–) button on the chest piece
- You will hear a voice prompt:
“System activation. Mode one. Wi-Fi initialization failed”
- SimScope® is now ready. Place it on a compatible manikin or wearable system and begin auscultation

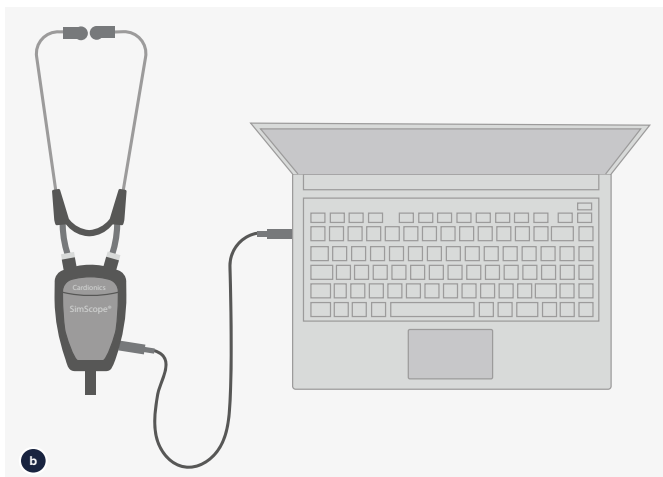


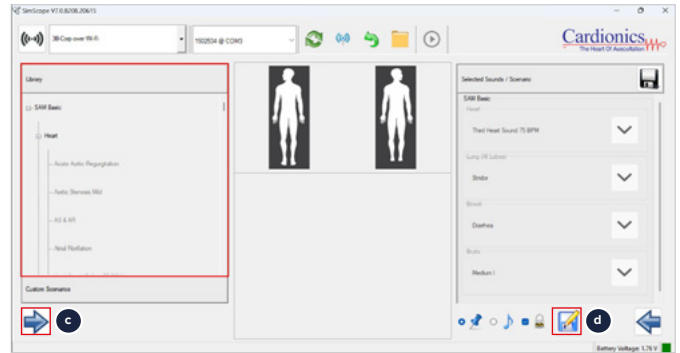
3. Setup Option 1: USB Mode (Wired)

For consistent, offline sessions:

- Open software
- Connect SimScope® via USB
- Assign sounds – either drag from the left to the right panel or simply double-click the desired sound
- Click **Save**
- Disconnect USB

SimScope now works in Standalone mode with saved sounds



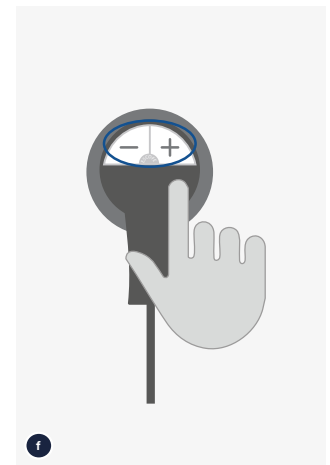
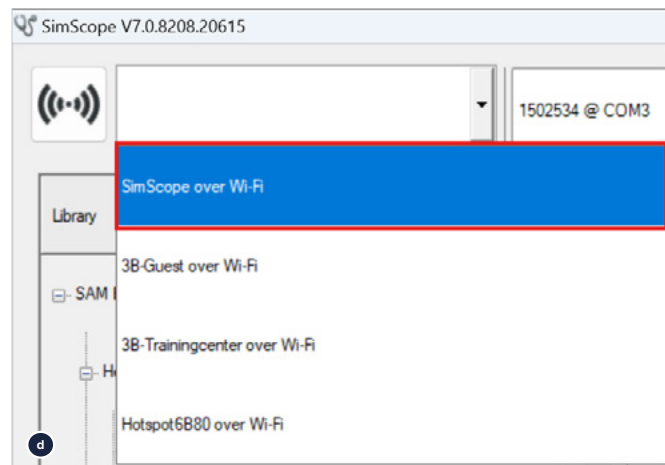
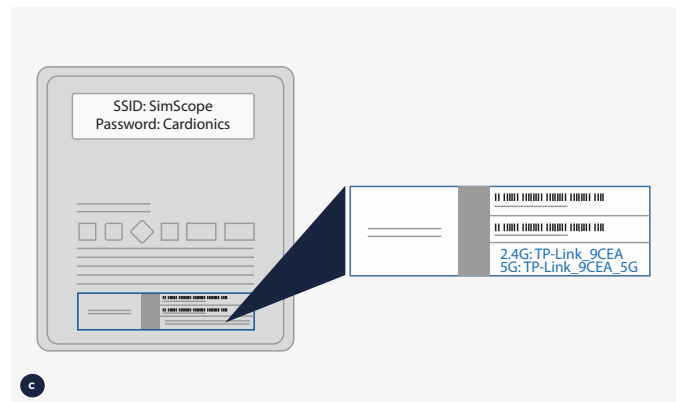
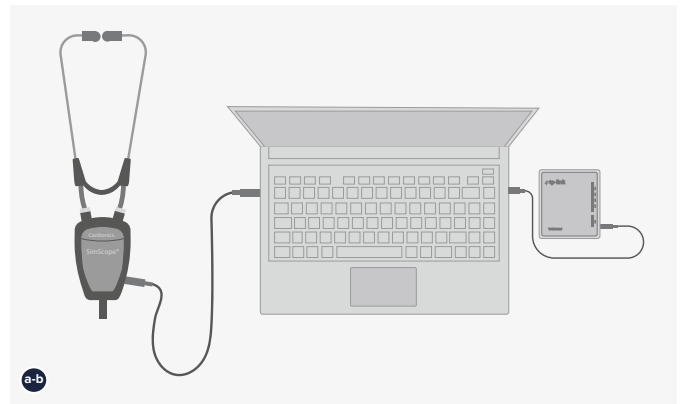


4. Setup Option 2: Wi-Fi Mode (Router Connection)

For live sound changes during session

- Plug in the router
- Connect SimScope® to your laptop using the USB cable.
- Launch the SimScope® software
 - Enter the Wi-Fi name and password (as shown on the sticker — “SimScope” and “Cardionics” — **if does not work use the original label on the router**)
- Return to the SimScope®** software and check if the dropdown in the top left corner shows the correct Wi-Fi network name (e.g., **SimScope_5G** or **TP-Link_XXXX**)
If it's not visible, click the dropdown and select it manually
- Disconnect the USB cable
- Turn on SimScope® by pressing + or -. Wait for the prompt: **“Wi-Fi connected”**

You can now change sounds wirelessly using the software

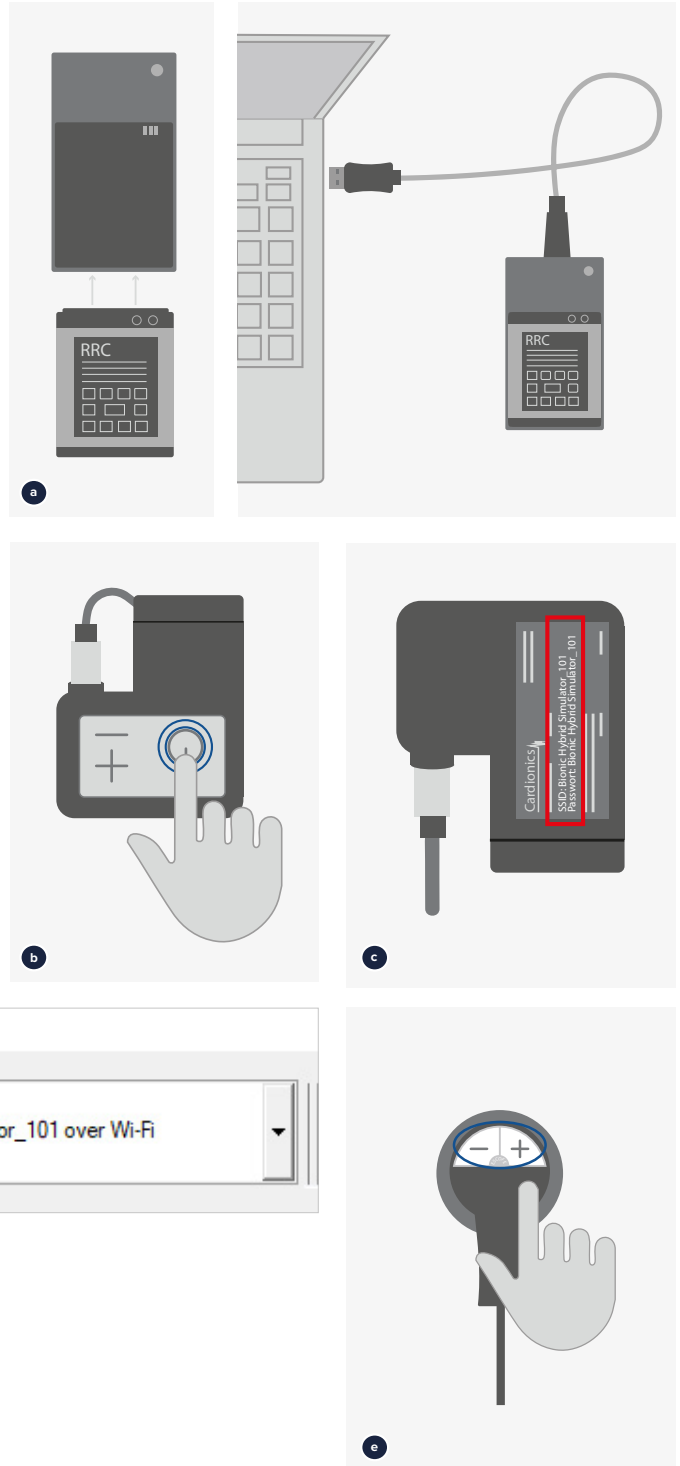


5. Special Setup: BHS (Bionic Hybrid Simulator)

For wearable auscultation with live control

- a. **Ensure the battery is fully charged.** If not, charge it using the method shown in the image on the right
- b. Once charged, insert the battery back into the Tech Pack, then power it on. Wait 60 seconds for the router signal to activate
- c. On your laptop, open the Wi-Fi settings
 - Select the network **Bionic Hybrid Simulator_XXX** (where XXX = last 3 digits of the serial number)
 - Enter a password or Click **“Connect using a security key instead”** and enter it there
 - Enter the password printed on the back of the Tech Pack battery
- d. Open the **SimScope** app on your laptop
 - In the top-left corner of the SimScope app, click the dropdown menu
 - Choose the BHS Wi-Fi network you just connected to
 - Wait for the connection status to appear
- e. Turn on SimScope by pressing + or -. Wait for the prompt: **“Wi-Fi connected”**

You can now change sounds wirelessly using the software



SimScope® is ready to start!



3B Scientific GmbH • Ludwig-Erhard-Straße 20 • 20459 Hamburg • Germany • 3bscientific.com

Phone: +49 40 73966-0 • Fax: +49 40 73966-100 • E-mail: info@3bscientific.com